

# VESSEL

REDEFINE LIFE IN NATURE



2024 CATALOGUE

VESSEL®

## VESSEL

Through its range of high-tech, high-quality, and high-performance prefabricated houses, VESSEL has been promoting a strong development of camping tourism in the domestic market since 2018. Its main products are inspired by space capsule designs, which are widely appreciated by young groups. So far, several innovative homestay projects have been successfully launched, achieving good commercial performance.

Under the direction of Guangdong VESSEL Cultural Tourism Development Co., Ltd., the VESSEL team provides rigorous and efficient solutions for the most sensitive aspects in the development and operation of cultural tourism projects, such as panoramic hotels, charming camping parks, resorts, B&B accommodations, and other lodging contexts.

The main members of the VESSEL team are professionals with an international vision and university education abroad. Unlike the traditional architectural industry, the VESSEL team centers its concept on Internet Plus Architectural Technology, providing comprehensive services such as camping park consultancy, landscape planning, industrial design, interior design, machinery, and more, making the team the best in the field of camping equipment.

Based on research into the market of young camping park users, VESSEL redefines high-end outdoor camping parks with new concepts, surpassing traditional camping parks represented by wooden houses, motorhomes, and container accommodations. In terms of technology, there are more than 100 patents, including invention patents, practical patents, and design patents. VESSEL's R&D center in Shenzhen applies for an average of one patent per month. In terms of product delivery, 100% industrialized production of the entire house has been achieved. The house can be put into use immediately after the plumbing and electrical systems are installed, greatly accelerating delivery efficiency, minimizing environmental damage caused by on-site construction, and meeting the ecological development requirements of cultural tourism projects.

Overview of  
VESSEL  
Products

Included in the Price:

- VAT (23%)
- Transportation to Portugal



**VESSEL S5**

Length x Width x Height:

8,5 x 3,3 x 3,3 m

Construction Area: 28,0 m<sup>2</sup>

Price: 65 000 €



**VESSEL E5**

Length x Width x Height:

8,5 x 3,3 x 3,2 m

Construction Area: 28,0 m<sup>2</sup>

Price: 65 000 €



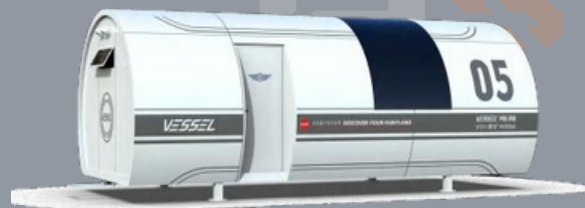
**VESSEL E7**

Length x Width x Height:

11,5 x 3,3 x 3,2 m

Construction Area: 38,0 m<sup>2</sup>

Price: 81 000 €



**VESSEL O5**

Length x Width x Height:

7,5 x 3,6 x 3,2 m

Construction Area: 27,0 m<sup>2</sup>

Price: 49 000 €



**VESSEL V5**

Length x Width x Height:

7,5 x 3,3 x 3,2 m

Construction Area: 24,75 m<sup>2</sup>

Price: 49 000 €



**VESSEL V7**

Length x Width x Height:

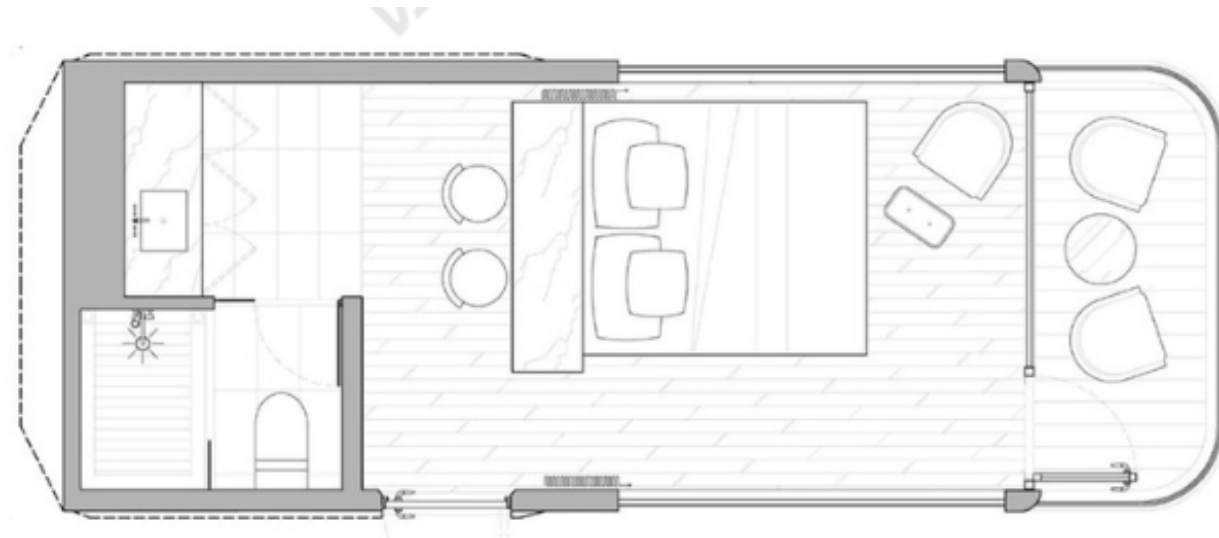
9,5 x 3,3 x 3,2 m

Construction Area: 31,35 m<sup>2</sup>

Price: 68 000 €

## VESSEL 2023 S5

PRESENTATION OF VESSEL PRODUCTS (STANDARD MODELS) - VESSEL S5



- Product Dimensions (L x W x H): 8.5 x 3.3 x 3.3 m
- Construction Area: 28.0 m2
- Room Capacity: 2 people
- Electrical Power of the Product: 12KW
- Weight: 8 tons

65 000 €

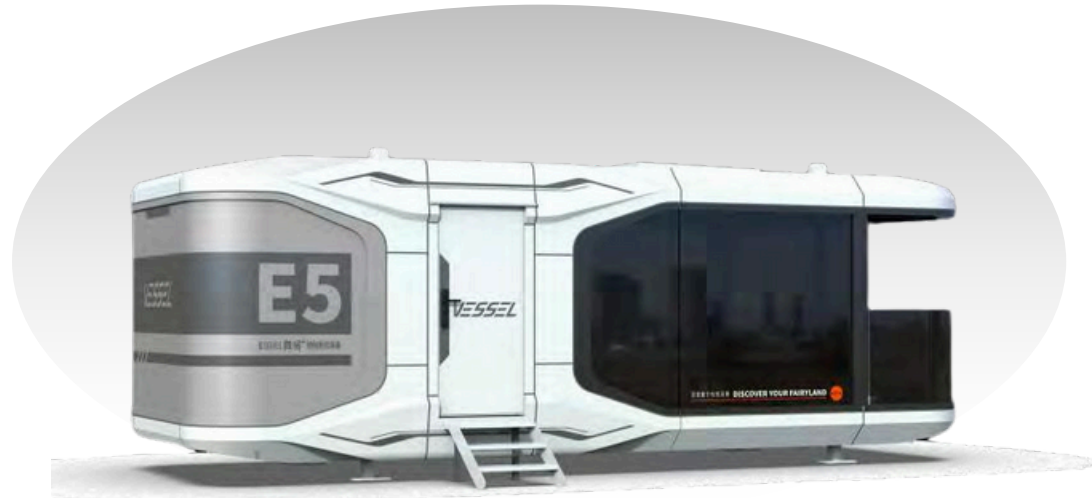
Product External Composition	Product Interior Composition	Product Accessories
Galvanized steel structural frame	Integrated ceiling/Wall composition module	Foot support of product
Fluorocarbon sprayed aluminum alloy housing	Eco-friendly floor	Lifting ring
Insulation and waterproof construction system	Opaque glass door to bathroom	Fixtures for transportation
Hollow tempered glass doors and windows	Bathroom marble tile/ceramic tile floor	Product packaging
Hollow laminated glass skylight	Bathroom sink/Basin/Vanity mirror	
Stainless steel entry door	Closestool/Shower facilities	
VESSEL LOGO	Lighting System	
Viewing balcony	Water supply and sewage facilities/Electric system	Customized Furniture
	Blackout curtains with standard color	Customized table
	2 hp heating and cooling air conditioner(Midea)	
	80 liter electric water heater(Midea)	
Intelligent Control System		
Insert card for power		
Multi-scenario mode switch		
Intelligent lighting control switch		
Intelligent access control system		





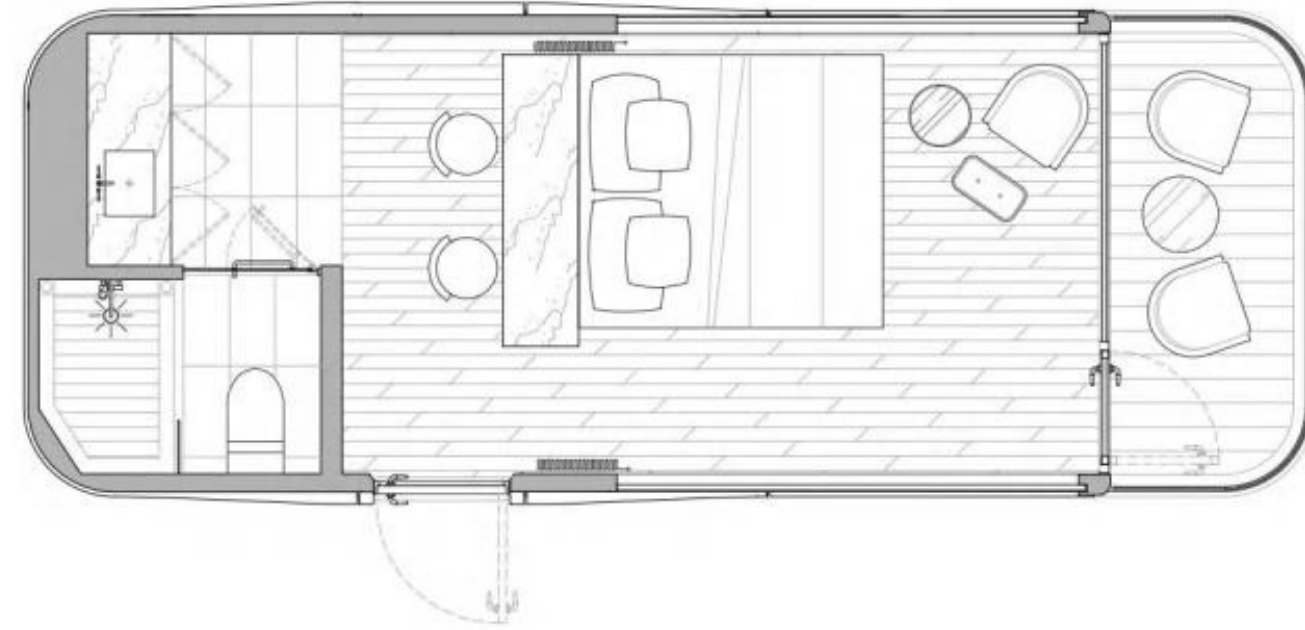
## VESSEL E5

PRESENTATION OF VESSEL PRODUCTS (STANDARD MODELS) - VESSEL E5



- Product Dimensions (L x W x H): 8.5 x 3.3 x 3.2 m
- Construction Area: 28.0 m2
- Room Capacity: 2 people
- Electrical Power of the Product: 12KW
- Weight: 8 tons

65 000 €

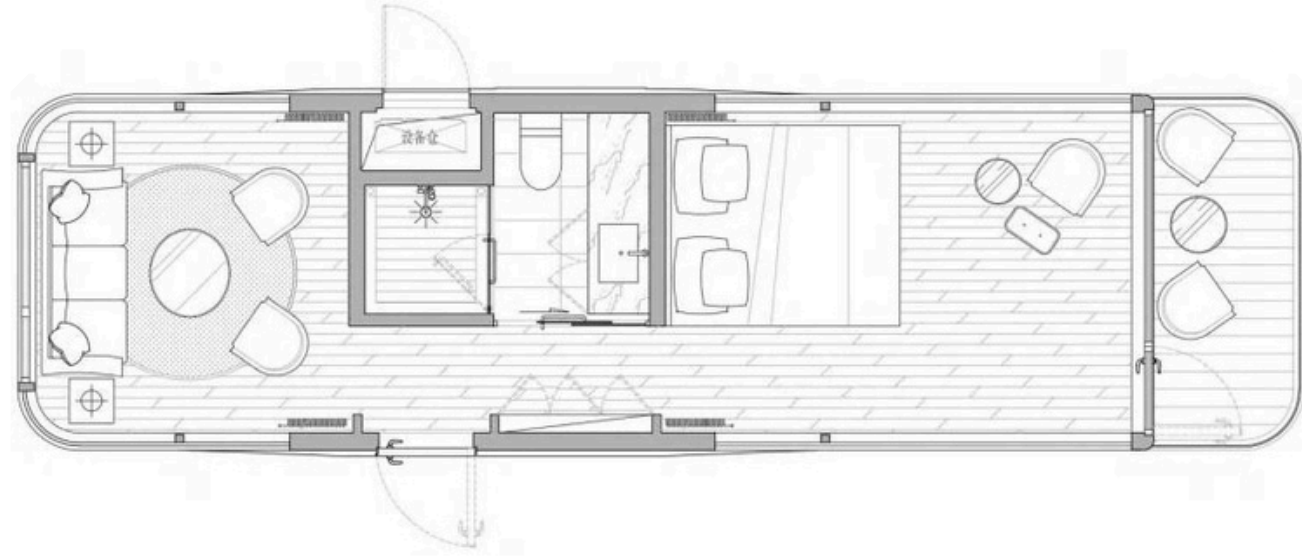
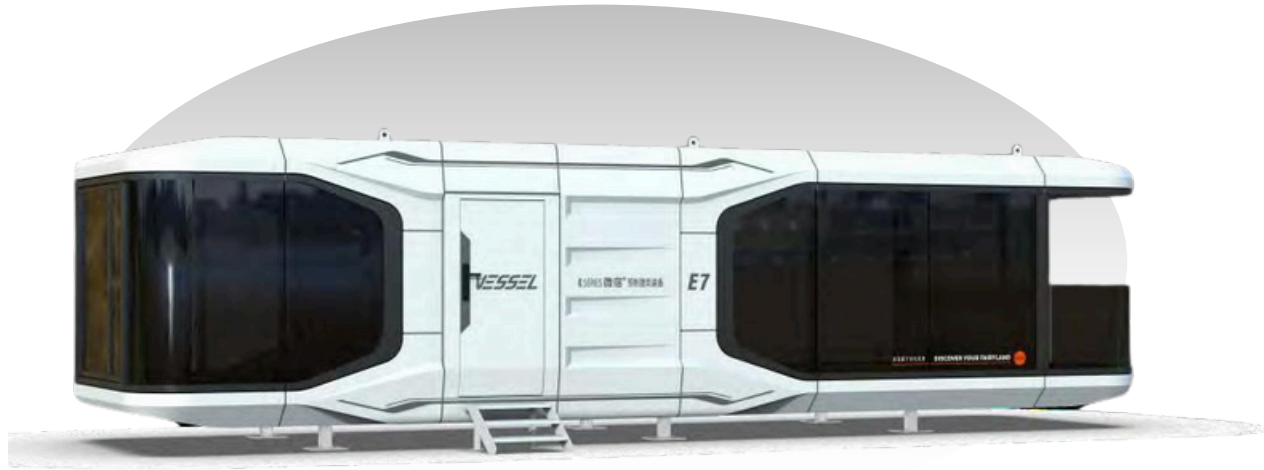


Product External Composition	Product Interior Composition	Product Accessories
Galvanized steel structural frame	Integrated ceiling/Wall composition module	Foot support of product
Fluorocarbon sprayed aluminum alloy housing	Eco-friendly floor	Lifting ring
Insulation and waterproof construction system	Opaque glass door to bathroom	Fixtures for transportation
Hollow tempered glass doors and windows	Bathroom marble tile/ceramic tile floor	Product packaging
Hollow laminated glass skylight	Bathroom sink/Basin/Vanity mirror	
Stainless steel entry door	Closestool/Shower facilities	
VESSEL LOGO	Lighting System	
Viewing balcony	Water supply and sewage facilities/Electric system	Customized Furniture
	Blackout curtains with standard color	Customized table
	2 hp heating and cooling air conditioner(Midea)	
	80 liter electric water heater(Midea)	
Intelligent Control System		
Insert card for power		
Multi-scenario mode switch		
Intelligent lighting control switch		
Intelligent access control system		



# VESSEL E7

PRESENTATION OF VESSEL PRODUCTS (STANDARD MODELS) - VESSEL E7



- Product Dimensions (L x W x H): 11.5 x 3.3 x 3.2 m
- Construction Area: 38.0 m<sup>2</sup>
- Room Capacity: 2-4 people
- Electrical Power of the Product: 15KW
- Weight: 10.5 tons

81 000 €

Product External Composition	Product Interior Composition	Product Accessories
Galvanized steel structural frame	Integrated ceiling/Wall composition module	Foot support of product
Fluorocarbon sprayed aluminum alloy housing	Eco-friendly floor	Lifting ring
Insulation and waterproof construction system	Opaque glass door to bathroom	Fixtures for transportation
Hollow tempered glass doors and windows	Bathroom marble tile/ceramic tile floor	Product packaging
Hollow laminated glass skylight	Bathroom sink/Basin/Vanity mirror	
Stainless steel entry door	Closestool/Shower facilities	
VESSEL LOGO	Lighting System	<b>Customized Furniture</b>
Viewing balcony	Water supply and sewage facilities/Electric system	Customized lockers
	Blackout curtains with standard color	
	2 hp heating and cooling air conditioner(Midea)	
	80 liter electric water heater(Midea)	
<b>Intelligent Control System</b>		
Insert card for power		
Multi-scenario mode switch		
Intelligent lighting control switch		
Intelligent access control system		

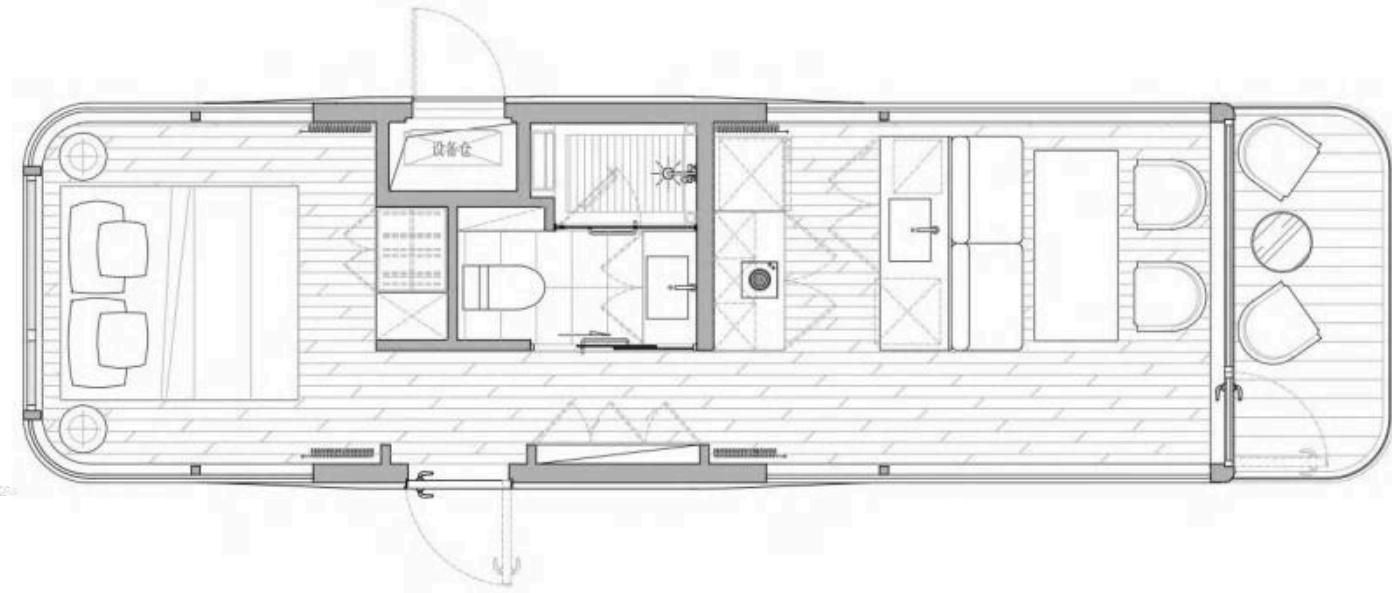
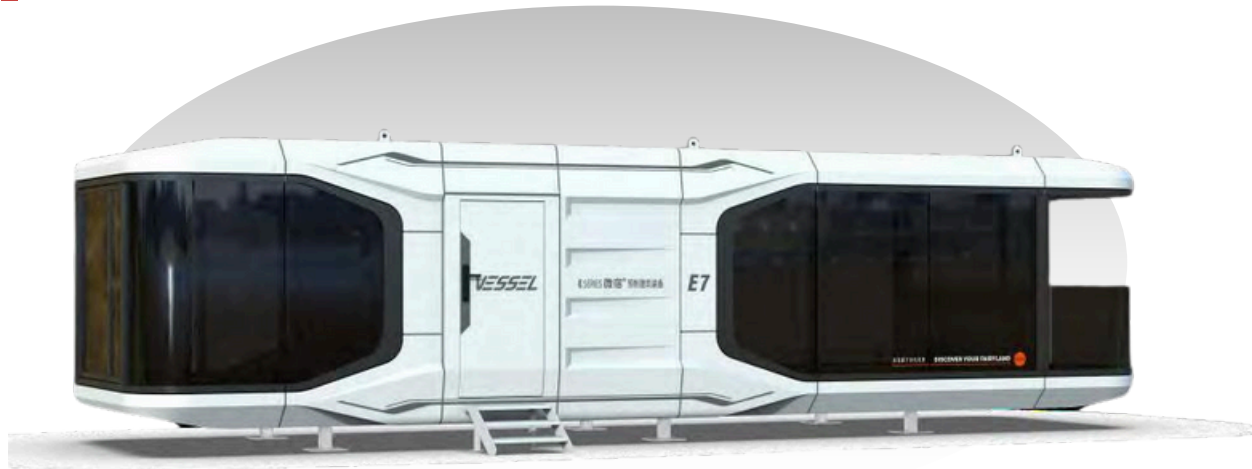






# VESSEL E7P

PRESENTATION OF VESSEL PRODUCTS (STANDARD MODELS) - VESSEL E7P



- Product Dimensions (L x W x H): 11.5 x 3.3 x 3.2 m
- Construction Area: 38.0 m2
- Room Capacity: 2-4 people
- Electrical Power of the Product: 15KW
- Weight: 11.5 tons

**81 000 €**

Product External Composition	Product Interior Composition	Product Accessories
Galvanized steel structural frame	Integrated ceiling/Wall composition module	Foot support of product
Fluorocarbon sprayed aluminum alloy housing	Eco-friendly floor	Lifting ring
Insulation and waterproof construction system	Opaque glass door to bathroom	Fixtures for transportation
Hollow tempered glass doors and windows	Bathroom marble tile/ceramic tile floor	Product packaging
Hollow laminated glass skylight	Bathroom sink/Basin/Vanity mirror	
Stainless steel entry door	Closestool/Shower facilities	
VESSEL LOGO	Lighting System	
Viewing balcony	Water supply and sewage facilities/Electric system	Customized Furniture
	Blackout curtains with standard color	Customized lockers
	2 hp heating and cooling air conditioner(Midea)	Wall-mounted wardrobe
	80 liter electric water heater(Midea)	Kitchen worktop
	Integrated Range Hood, Induction Cooker, Electric Oven	Kitchen island
Intelligent Control System		
Insert card for power		
Multi-scenario mode switch		
Intelligent lighting control switch		
Intelligent access control system		





VESSEL 微宿

THE BEST DISCOVER YOUR FAIRYLAND

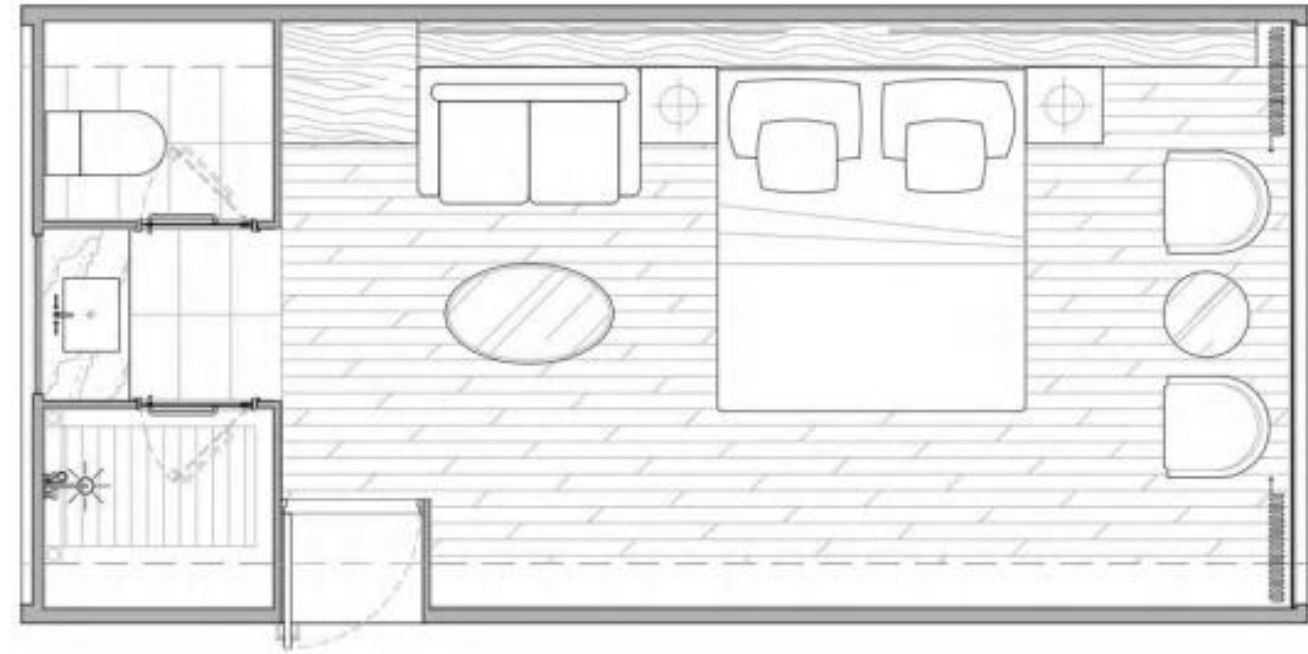
# VESSEL 05

PRESENTATION OF VESSEL PRODUCTS (STANDARD MODELS) - VESSEL 05



- Product Dimensions (L x W x H): 7.5 x 3.6 x 3.2 m
- Construction Area: 27.0 m2
- Room Capacity: 2 people
- Electrical Power of the Product: 12KW
- Weight: 6.5 tons

49 000 €



Product External Composition	Product Interior Composition	Product Accessories
Galvanized steel structural frame	Integrated ceiling/Wall composition module	Foot support of product
Fluorocarbon sprayed aluminum alloy housing	Eco-friendly floor	Lifting ring
Insulation and waterproof construction system	Opaque glass door to bathroom	Fixtures for transportation
Hollow tempered glass windows	Bathroom marble tile floor	Product packaging
Laminated tempered glass skylight	Bathroom sink/Basin/Vanity mirror	
Stainless steel entry door	Closestool/Shower facilities	
VESSEL LOGO	Lighting System	
	Water supply and sewage facilities/Electric system	<b>Customized Furniture</b>
	Blackout curtains with standard color	Customized bedside table
	2 hp heating and cooling air conditioner(Midea)	
	80 liter electric water heater(Midea)	
	Other customized furniture	
<b>Intelligent Control System</b>		
Insert card for power		
Multi-scenario mode switch		
Intelligent lighting control switch		
Intelligent access control system		





05

DISCOVER YOUR FAIRYLAND

# VESSEL V5

PRESENTATION OF VESSEL PRODUCTS (STANDARD MODELS) - VESSEL V5



- Product Dimensions (L x W x H): 7.5 x 3.3 x 3.2 m
- Construction Area: 24.75 m<sup>2</sup>
- Room Capacity: 2 people
- Electrical Power of the Product: 12KW
- Weight: 6.5 tons

49 000 €



Product External Composition	Product Interior Composition	Product Accessories
Galvanized steel structural frame	Integrated ceiling/Wall composition module	Foot support of product
Fluorocarbon sprayed aluminum alloy housing	Eco-friendly floor	Lifting ring
Insulation and waterproof construction system	Opaque glass door to bathroom	Fixtures for transportation
Hollow tempered glass windows	Bathroom marble tile floor	Product packaging
Side hinged door	Bathroom sink/Basin/Vanity mirror	
VESSEL LOGO	Closestool/Shower facilities	
	Lighting System	
	Water supply and sewage facilities/Electric system	
	Blackout curtains with standard color	
	2 hp heating and cooling air conditioner(Midea)	
	80 liter electric water heater(Midea)	
Intelligent Control System		
Insert card for power		
Multi-scenario mode switch		
Intelligent lighting control switch		
Intelligent access control system		





# VESSEL V7

PRESENTATION OF VESSEL PRODUCTS (STANDARD MODELS) - VESSEL V7



- Product Dimensions (L x W x H): 9.5 x 3.3 x 3.2 m
- Construction Area: 33.25 m2
- Room Capacity: 2-4 people
- Electrical Power of the Product: 15KW
- Weight: 9 tons

**68 000 €**

Product External Composition	Product Interior Composition	Product Accessories
Galvanized steel structural frame	Integrated ceiling/Wall composition module	Foot support of product
Fluorocarbon sprayed aluminum alloy housing	Eco-friendly floor	Lifting ring
Insulation and waterproof construction system	Opaque glass door to bathroom	Fixtures for transportation
Hollow tempered glass windows	Bathroom marble tile floor	Product packaging
Side hinged door	Bathroom sink/Basin/Vanity mirror	
VESSEL LOGO	Closestool/Shower facilities	
	Lighting System	
	Water supply and sewage facilities/Electric system	<b>Customized Furniture</b>
	Blackout curtains with standard color	Customized wash basin
	1.5 hp heating and cooling air conditioner(Midea)	
	80 liter electric water heater(Midea)	
<b>Intelligent Control System</b>		
Insert card for power		
Multi-scenario mode switch		
Intelligent lighting control switch		
Intelligent access control system		

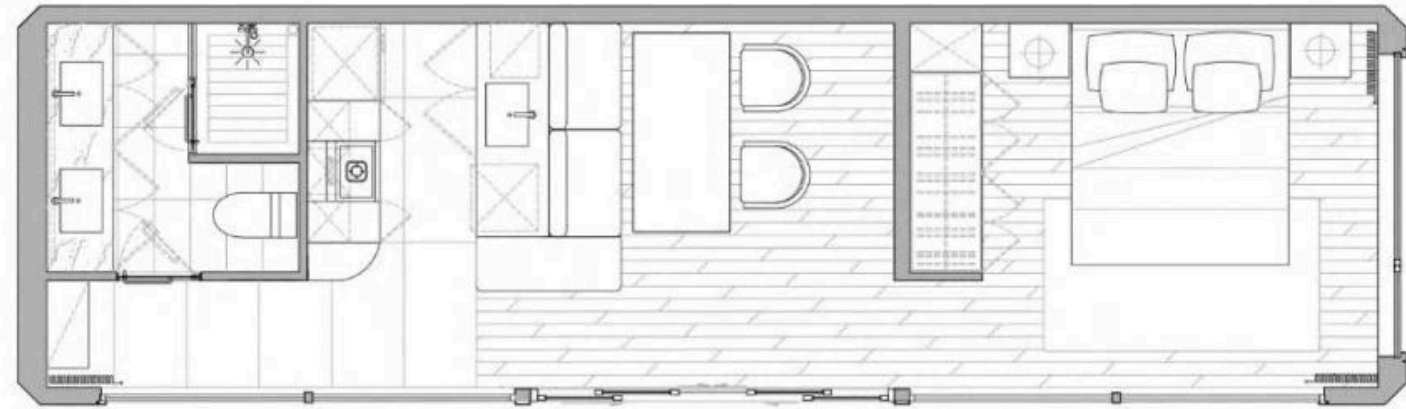






# VESSEL V7P

PRESENTATION OF VESSEL PRODUCTS (STANDARD MODELS) - VESSEL V7P



- Product Dimensions (L x W x H): 11.5 x 3.3 x 3.2 m
- Construction Area: 38.0 m<sup>2</sup>
- Room Capacity: 2-4 people
- Electrical Power of the Product: 20KW
- Weight: 10 tons

68 000 €

Product External Composition	Product Interior Composition	Product Accessories
Galvanized steel structural frame	Integrated ceiling/Wall composition module	Foot support of product
Fluorocarbon sprayed aluminum alloy housing	Eco-friendly floor	Lifting ring
Insulation and waterproof construction system	Opaque glass door to bathroom	Fixtures for transportation
Hollow tempered glass windows	Bathroom marble tile floor	Product packaging
Side hinged door	Bathroom sink/Basin/Vanity mirror	
VESSEL LOGO	Closestool/Shower facilities	
	Lighting System	
	Water supply and sewage facilities/Electric system	
	Blackout curtains with standard color	
	2 hp heating and cooling air conditioner(Midea)	
	80 liter electric water heater(Midea)	
Intelligent Control System		
Insert card for power		
Multi-scenario mode switch		
Intelligent lighting control switch		
Intelligent access control system		





Patent Number: 201920418867.7  
The patented construction and assembly method of the "card slot" module by Vessel, waterproof, ensures low thermal conductivity even at junctions.

The thickness of the steel structure creates an excellent space for the installation of the insulation layer, ensuring that the entire base structure achieves extremely high thermal performance.



Patent Number: 201920418861.X  
Vessel's patented steel structure installation framework for quick and rigorous assembly with high mechanical properties.

Patent Number: 201920423283.9  
Vessel offers a wide range of panoramic technical solutions, from floor to ceiling, suitable for the climatic characteristics of different regions, allowing for maximum comfort and environmental protection.

For use in extremely cold areas, Vessel models can be equipped with heated floors distributed across various points, combined with a high thermal structure that ensures interior comfort and warmth.

Materials nobres VESSEL

- Bedroom Ceiling and Walls  
White Aluminum Sheet
- Bathroom Walls  
Gray Bamboo Wood Fiber Panel
- Bathroom Walls  
Black Marble Bamboo Wood Fiber Panel
- Bathroom Flooring  
Black Marble



- Sink Surface  
White Tile
- Bathroom Closet  
Wood
- Bathroom Flooring  
Gray Marble
- Main Room Floor  
Wood



#### Transport

The product is loaded onto a delivery vehicle (a semi-trailer provided by our company, with a length of 13.4 m, width of 3 m, and a height of  $\leq 4.2$  m) and shipped to the destination.

#### Elevation

Upon arrival at the project site, the product should be lifted by a local crane service, with remote guidance provided by our technical team. The product weight ranges between 6 to 10 tons. It is recommended to arrange for  $\geq 25$  tons for loading and unloading.

#### Installation

Before installation, the plumbing system, electrical system, and foundations should be prepared according to the standardized plans provided by our company. Place the product in the designated location under the guidance of our technicians and test its operation upon installation completion.

Unrestricted,  
environmentally friendly

Suited for mountainous areas, forests, tidal flats, etc. No construction waste, environmentally friendly



Prefabricated, quick installation

60 days for production, 2 hours for installation. No on-site construction required.



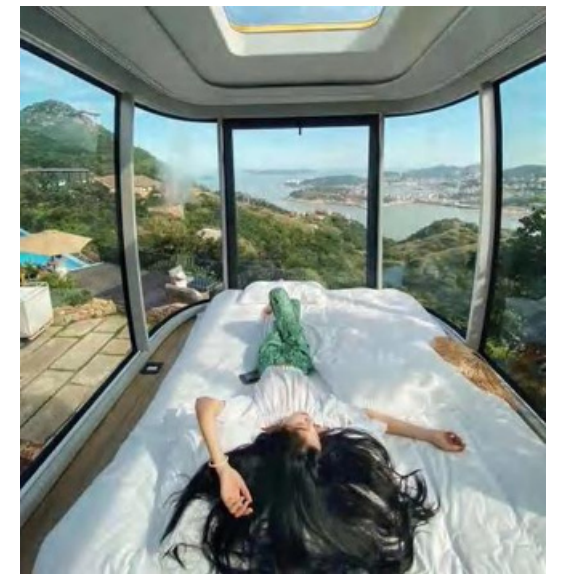
Unique and appealing design

At the forefront of fashion trends. Featured in numerous press reports, market success. 100% original design.



Panoramic view,  
in touch with nature

270-degree floor-to-ceiling window, excellent insulation, sleeping in the landscape, appreciating the beauty of nature



**31**  
31 PROVINCES

**81**  
81 CITIES

**100+**  
100+ PROJECTS















Awards and certificates

Awards

2018: IDG Asia MIC

2018-2019: IDG Asia MIC

2019: China Innovation and Entrepreneurship Achievement Fair  
Technology Innovation Growth Enterprise

2019: Pioneering Company in Innovation and Technology in China's  
Construction Technology Industry

2020: Most Beautiful Architectural Product in Cultural and Tourism Industry  
- 1st Place

2020: Shenzhen Global Design Awards

2020: SDA Awards - Global Anti-Epidemic Product Design Award -  
Excellence Award

2020: Jingzhu

2020 Award - Best Example of B&B Hotel Application

2020: B&B Annual Awards - Boao International Tourism Award

2020: Pengzhou Longmen Mountain B&B Association - B&B Excellence  
Award

2021: International Architectural Design Competition for Civilization,  
Historic Trees and Future Habitat - Excellence Award

2021: Awarded by the Ministry of Culture and Tourism as the best example  
of national culture and tourism technologies and equipment

2021: Featured Exhibitor at Hainan International Tourism Equipment  
Exhibition

2022: Highly Technological Innovation Company

2022: Example of Excellence in Innovation and Services in Tourism and  
Travel Industry

2022: Member of the International Mountain Tourism Alliance

Intellectual Property and  
Authentications

ISO 9001 Quality Management System Certification

Product Construction Safety Test Certificate

CE Quality Certification of the European Union Multiple

trademarks, including VESSEL and others Invention

Patents, Practical Patents, Design Patents



# CONTACTS



+351 934 850 084



Vessel Portugal



info@vessel-portugal.com



www.vessel-portugal.com



@VesselPortugal